

日程 / Agenda

月日 /Date	時間 /Time Table	摘要 /Contents	備考 /Notes	
11月17日(土) Sat., Nov. 17	08:00~08:30	■各人紹介、日程・内容説明 Introducing Speakers, Participants Instruction of the program	Seigo Nakamura (Moderator)	
	08:30~	■講演 / Lectures	Speakers:	
	08:30~09:10	・LuminalA/B	Emiel J. T. Rutgers	
	09:10~09:50	・Triple Negative	William J. Gradishar	
	09:50~10:30	・Her2(+), Triple Positive	Robert W. Carlson	
	10:30~10:40	■休憩 / Break		
	10:40~11:20	・効果予測検査法の最近の進歩 Recent Developments in Therapeutic Efficacy Assays	Laura J. van't Veer	
	11:20~12:00	・誰がどのように術前・術後の化学療法、 その適応を決定しているか? Who and how to determine the indication of neoadjuvant or adjuvant chemotherapy?	Zhi-Min Shao	
	12:00~13:00	■昼食 / Lunch		
	13:00~	■チーム毎講義室に集合 / Break into teams	Hiroyuki Takei	
	非公開 Closed session	<参加者 / Participants>		<スピーカー / Speakers>
		各チーム、明日発表の内容、 スライド資料等作成 13:00~17:30 Discussion and preparation for the presentation in teams	座談会「世界の乳がん診療の 変化総括」 14:30~17:30 Discussion "Summary of changes in the world's breast cancer Diagnosis & Treatment"	
	11月18日(日) Sun., Nov. 18	09:00~	■各人紹介、日程・内容説明 Introducing Speakers, Participants. Instruction of the program.	Seigo Nakamura (Moderator)
09:15~		■討論 / Debate	All speakers and participants	
09:15~10:15		・Aチーム発表(発表20分+質疑40分) Team A (Presentation 20min.+ Q&A 40min.)		
10:15~11:15		・Bチーム発表(発表20分+質疑40分) Team B (Presentation 20min.+ Q&A 40min.)		
11:15~11:30		■休憩 / Break		
11:30~12:30		・Cチーム発表(発表20分+質疑40分) Team C (Presentation 20min.+ Q&A 40min.)		
12:30~13:15		■昼食 / Lunch		
13:15~14:15		・Dチーム発表(発表20分+質疑40分) Team D (Presentation 20min. + Q&A 40min.)		
14:15~16:00		■総合討論 Comprehensive discussion	All speakers and participants	
16:00~16:20		■総括 / Review	Robert W. Carlson	
16:20~16:30	■終了 / Closing remarks	Seigo Nakamura		

2012 NCCN/JCCNB Debate



NPO法人
日本乳がん情報ネットワーク
Japan Comprehensive Cancer Network, Breast (JCCNB)

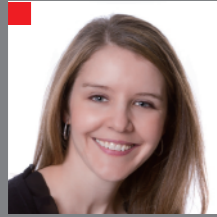
Japan Comprehensive Cancer Network, Breast (JCCNB)

〒142-0064 東京都品川区旗の台2-1-6 スリーエビル2階 Tel: 03-6426-9748 Fax: 03-6426-9749

2nd fl, fff Bldg, 2-1-6, HATANODAI, SHINAGAWA-KU TOKYO 142-0064 JAPAN Phone: +81 3 6426 9748 Fax: +81 3 6426 9749

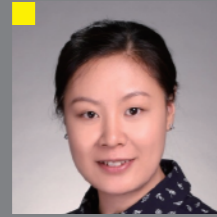
<http://www.jccnb.net>

team **A.** topic: Her2(+)



Monique de Bruin, MD, MPH

Postdoctoral Medical fellow, Medical Oncology, Stanford Cancer Center



Ying Fan, MD, PhD

Attending doctor at the Department of Medical Oncology in Cancer Hospital & Institute, Chinese Academy of Medical Sciences & Peking Union Medical College



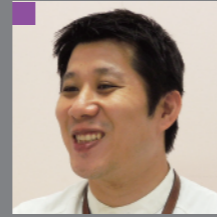
Chung Yeul Kim, MD

Clinical associated professor of pathology, Korea University Medical Center



Takahiro Nakayama, MD, PhD

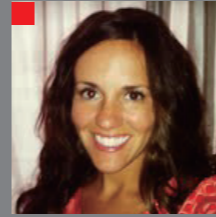
中山 貴寛
Deputy Director, Department of Breast and Endocrine Surgery Osaka Medical Center for Cancer and Cardiovascular Diseases



Takashi Kuwayama, MD

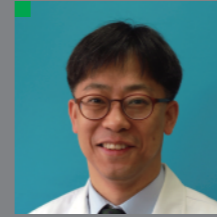
桑山 隆志
Assistant Professor, Department of Breast Surgical Oncology, Showa University

team **B.** topic: Luminal A/B



Sara Barnato, MD

3rd Year Fellow, Hematology-Oncology, Northwestern University Feinberg School of Medicine



Jeong Joon, MD, PhD

Professor, Department of Surgery, Gangnam Severance Hospital Yonsei University Medical College



Ching-Hung Lin, MD, PhD

Attending Physician, Dept. of Oncology, National Taiwan University Hospital Assistant Professor, Dept. of Internal Medicine National Taiwan University Hospital



Eriko Tokunaga, MD, PhD

徳永 えり子
Associate Professor, Department of Comprehensive Clinical Oncology, Faculty of Medical Science, Kyushu University



Hidetoshi Kawaguchi, MD, PhD

川口 英俊
Vice-Director, Department of Breast Surgery, Matsuyama Red Cross Hospital

● 一日目 / 1st day

11月17日 (土曜日) Nov. 17 (Sat) 08:00~12:00

● 場所 / Venue

聖路加国際病院トイスラー記念ホール

Teusler Memorial Hall, St. Luke's International Hospital

● 内容 / Contents

スピーカー講演、各チーム別打合せ

Lectures of the invited speakers, discussion in each group

● 二日目 / 2nd day

11月18日 (日曜日) Nov. 18 (Sun) 09:00~16:30

● 場所 / Venue

東京国際フォーラム ホールD5

Hall D5, Tokyo International Forum

● 内容 / Contents

議論

Debate

● 言語 / Language

英語 (同時通訳無し)

English (no simultaneous interpretation)

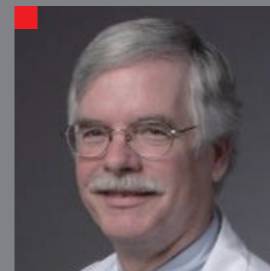
Speakers



Seigo Nakamura, MD, PhD

中村 清吾

Executive Director of JCCNB, Professor&Chairman, Department of Breast Surgical Oncology, Showa University School of Medicine, Director, Breast Center, Showa University Hospital



Robert W. Carlson, MD

Professor of Medicine, Division of Oncology Stanford University School of Medicine Stanford Cancer Center



Zhi-Min Shao, MD

Professor, Department of Breast Surgery, Cancer Hospital Fudan University, Shanghai doctoral degree program tutor



Laura J. van't Veer, PhD

Professor, Dept. of Laboratory Medicine, UCSF Angela & Shu Kai Chan Endowed Chair in Cancer Research, Leader, Breast Oncology Program, Director, Applied Genomics UCSF Helen Diller Family Comprehensive Cancer Center



William J. Gradishar, MD, FACP

Betsy Bramsen Professor of Breast Oncology Director, Maggie Daley Center for Women's Cancer Care Robert H. Lurie Comprehensive Cancer Center Northwestern University Feinberg School of Medicine



Emiel J. T. Rutgers, MD, PhD, FRCS

Professor, Head of the Department of Surgery, Chair of the Institutes Breast Cancer Working Group Treasurer, EORTC Breast Cancer Group, Netherlands Cancer Institute

● テーマ / Topic

ケースで学ぶ個別化治療の理論と実践

Studying the theory and practice of personalized medicine through cases.

team **A** : Her2(+)

team **B** : Luminal A/B

team **C** : Triple positive

team **D** : Triple negative

● 後援 / Supported by

富士フイルム株式会社

FUJIFILM Corporation

Advisor



Hiroyuki Takei, MD, PhD

武井 寛幸

Chief, Division of Breast Surgery, Saitama Cancer Center

■ アメリカ / U.S.A.

■ ヨーロッパ / EU

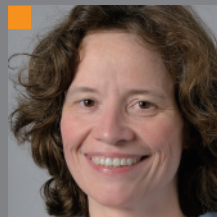
■ 中国 / China

■ 韓国 / Korea

■ 台湾 / Taiwan

■ 日本 / Japan

team **C.** topic: Triple positive



Sabine Linn, MD, PhD

Professor of Translational Oncology Utrecht University, Division of Medical Oncology and Molecular Pathology NetherLand Cancer Institute-Antoni van Leeuwenhoek Hospital



Junjie Li, MD

Resident, Breast Surgery Dept. Shanghai Cancer Center, Fudan University



InHae Park, MD

Active Staff in Center for Breast Cancer, National Cancer Center



Hiroko Bando, MD, PhD

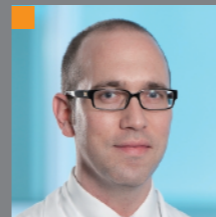
坂東 裕子
Assistant Professor, Div. of Clinical Medicine, Dept. of Breast & Endocrine Surgery, Faculty of Medicine, University of Tsukuba



Tomoyuki Aruga, MD

有賀 智之
Head, Department of Surgery, Tokyo Metropolitan Cancer and Infectious Disease Center Komagome Hospital

team **D.** topic: Triple negative



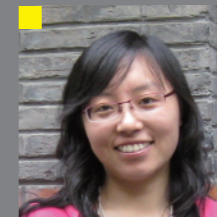
Michael Knauer, MD, PhD, FEBS

Head, Breast Cancer Center, Department of General and Visceral Surgery, Hospital of the Sisters of Charity, Linz, Austria



Biyun Wang, MD

Associate Professor, Breast Cancer Treatment Group, Dept. Medical Oncology, Fudan University Shanghai Cancer Hospital



BaoHua Yu, MD, PhD

Attending pathologist, department of pathology, Fudan University Shanghai Cancer Center



Hiroshi Ishiguro, MD, PhD, FACP

石黒 洋
Associate Professor, Outpatient Oncology Unit, Kyoto University Hospital



Naoki Hayashi, MD, PhD

林 直輝
Dept. of Breast Surgical Oncology, St. Luke's International Hospital, Second Department of Pathology, Showa University School of Medicine